



# 46AM60 HAWK AIR MOTOR

## PRODUCT DATA SHEET



### 46AM60... HAWK AIR MOTOR

The Hawk Air Motor is based on the RM102 that was designed by Clarks Mining Services almost 20 years ago. The RM102 has been used in both mining and construction as mixer motors, drill motors, air track tramming motors and power pack drives. The Hawk motor features the same robust RM102 gear rotors that are long lasting, have good wear characteristics and are also less susceptible to unfiltered air than other motors, such as vane and piston motors. The Hawk air motor develops high power for its size and has good starting torque to match. The Hawk Air Motor can be used to drive winches, hydraulic pumps, conveyors and fans. The motor is a good alternative to electric motors as it is suitable for use in hazardous zones. Optional IEC or SAE mounts are available with a variety of shafts to suit.

### APPLICATION

- Civil
- Mining
- Pump drives
- Hazardous zones
- Conveyor drives
- Winch drives

### OPTIONS

- IEC mount
- SAE mount
- DIN output shaft
- IEC output shaft

### FEATURES

- Robust gear motor
- 6.4:1 reduction gearbox
- Oil filled gearbox
- Fully reversible
- Optional port orientation

Ph: +612 4272 8311  
Fx: +612 4272 8533  
30 Waverley Drive  
Unanderra NSW 2526  
sales@clarksmineingservices.com.au

Designers and manufacturers of  
mining and construction equipment





# 46AM60 HAWK AIR MOTOR

## PRODUCT DATA SHEET

<b>POWER</b>	14kW at 6 Bar
<b>MAXIMUM FREE SPEED</b>	2000 RPM
<b>STARTING TORQUE</b>	154Nm at 6 Bar
<b>AIR CONSUMPTION</b>	500 SCFM at rated power (6 Bar)
<b>ACOUSTIC LEVEL</b>	Approx 120 dB(A) (no muffler)
<b>WEIGHT</b>	IEC Mount – 28kg SAE Mount – 30kg
<b>DIMENSIONS – SAE Mount</b>	319mm x 272mm x 220mm
<b>DIMENSIONS – IEC Mount</b>	308mm x 272mm x 220mm
<b>FILTRATION REQUIRED</b>	40 micron
<b>REQUIRED AIR LUBRICATION</b>	Rock Drill Oil ISO100-110 (variable)
<b>MAXIMUM AIR SUPPLY PRESSURE</b>	6 Bar

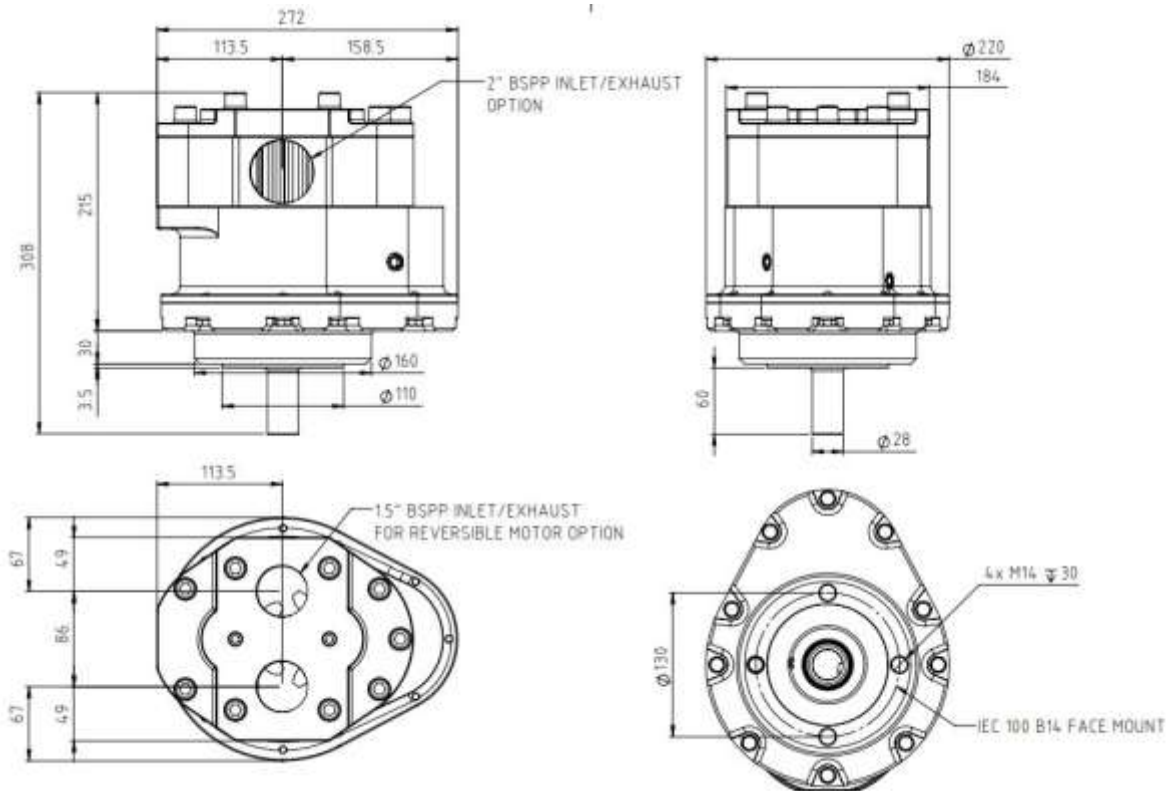


Figure 1 IEC Mount

Ph: +612 4272 8311  
 Fx: +612 4272 8533  
 30 Waverley Drive  
 Unanderra NSW 2526  
 sales@clarksmineingservices.com.au

**Designers and manufacturers of  
 mining and construction equipment**





# 46AM60 HAWK AIR MOTOR

## PRODUCT DATA SHEET

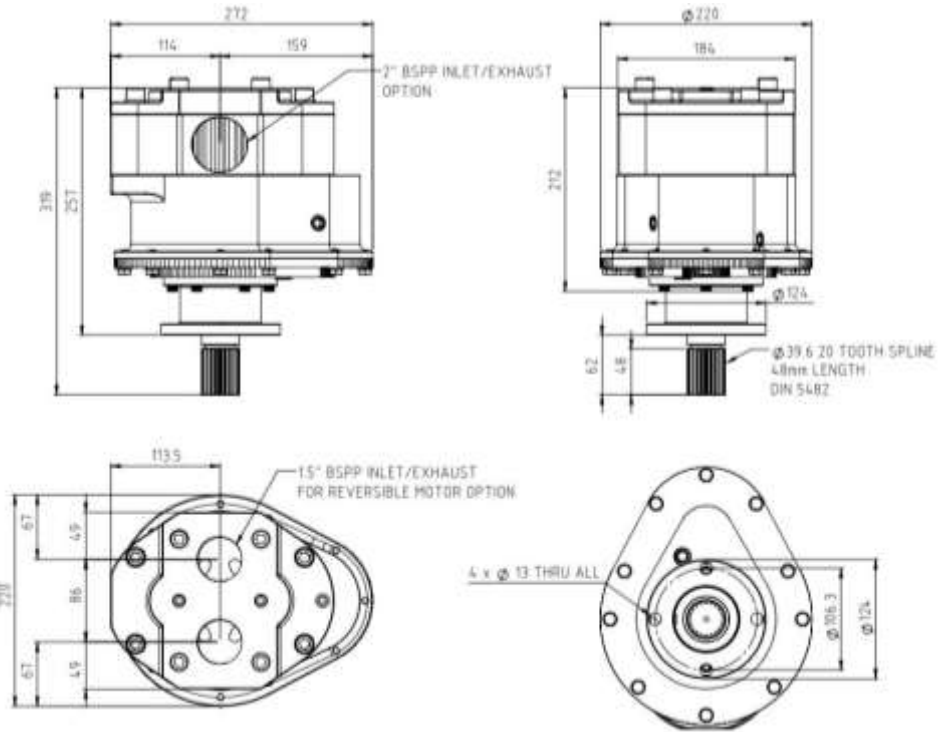


Figure 2 SAE Mount

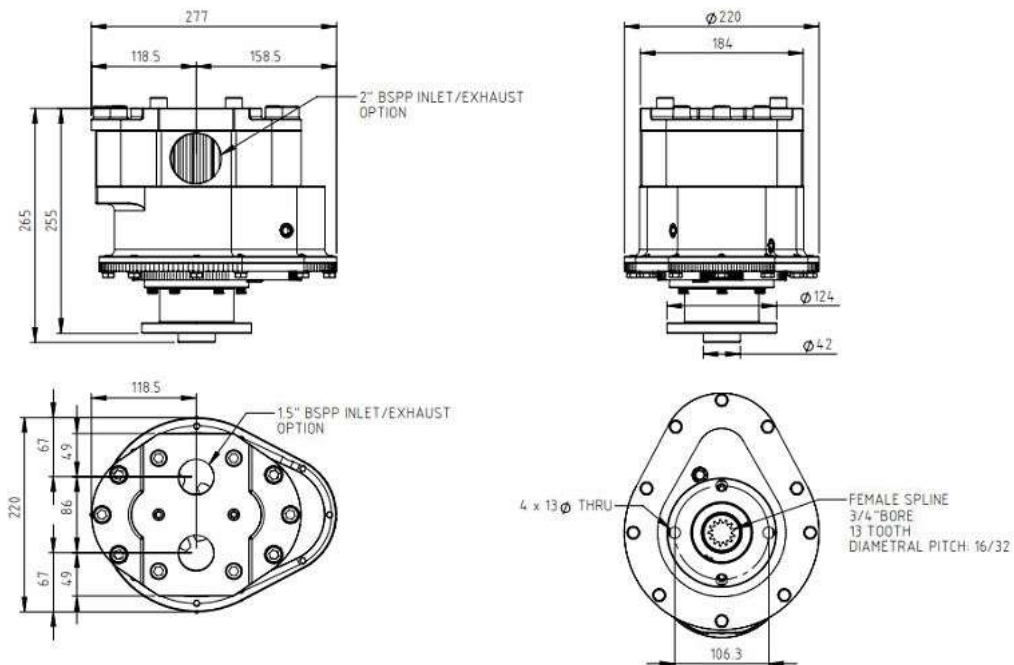


Figure 3 SAE Mount with Female Spline

Ph: +612 4272 8311  
 Fx: +612 4272 8533  
 30 Waverley Drive  
 Unanderra NSW 2526  
 sales@clarksmineingservices.com.au

Designers and manufacturers of  
 mining and construction equipment





# 46AM60 HAWK AIR MOTOR

## PRODUCT DATA SHEET

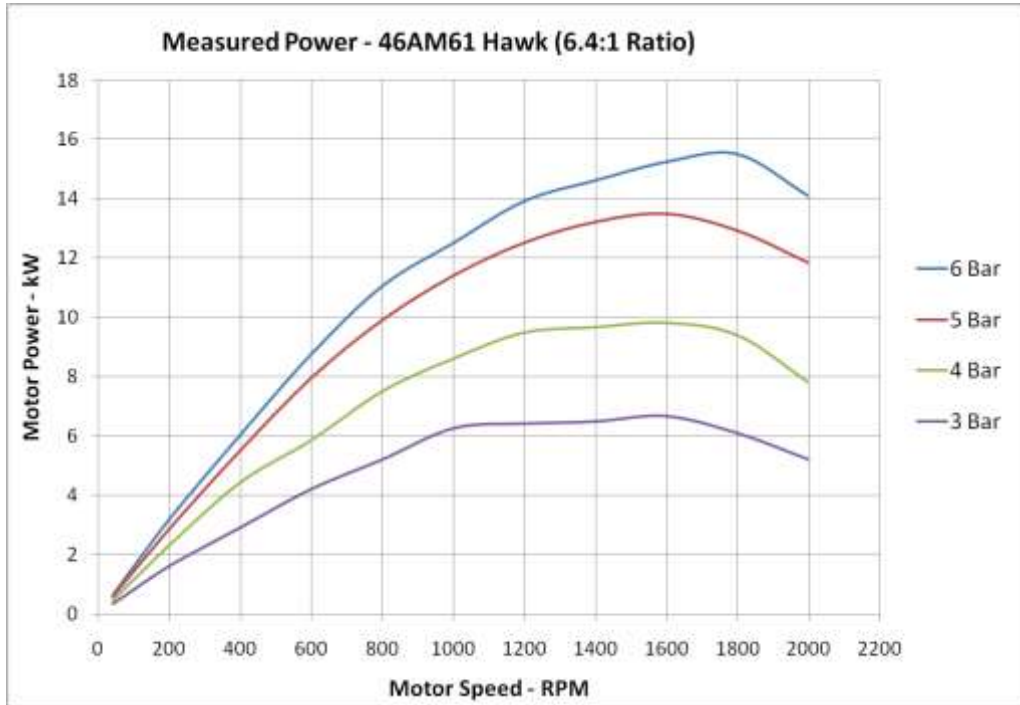


Figure 4 Measured Power

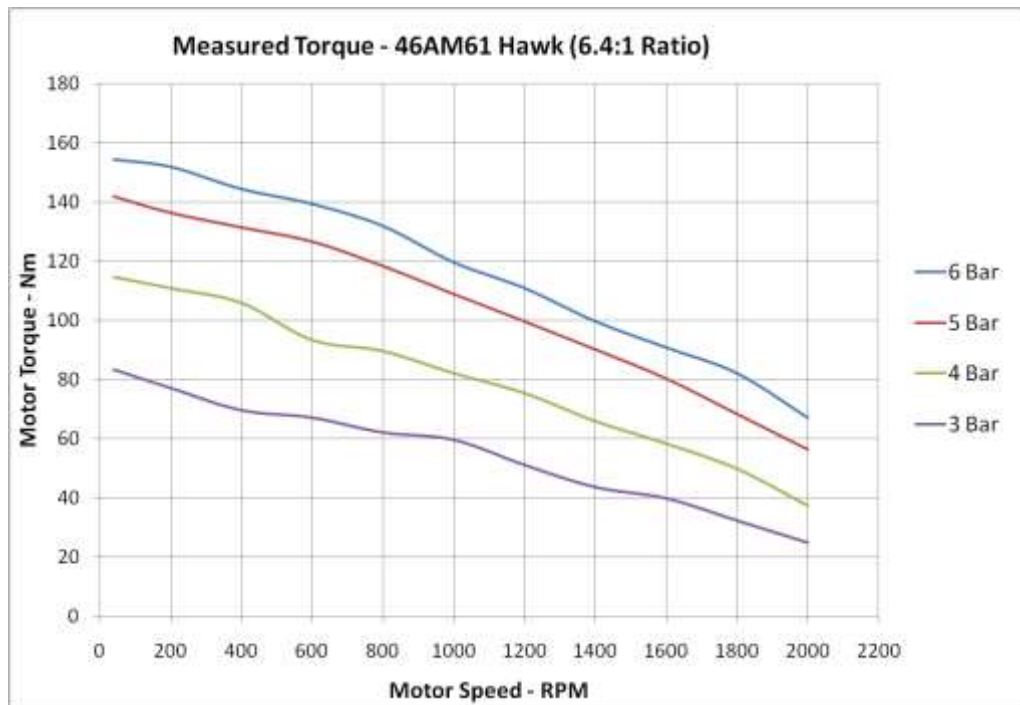


Figure 5 Measured Torque

Ph: +612 4272 8311  
Fx: +612 4272 8533  
30 Waverley Drive  
Unanderra NSW 2526  
sales@clarksmineingservices.com.au

Designers and manufacturers of  
mining and construction equipment





# 46AM60 HAWK AIR MOTOR

## PRODUCT DATA SHEET

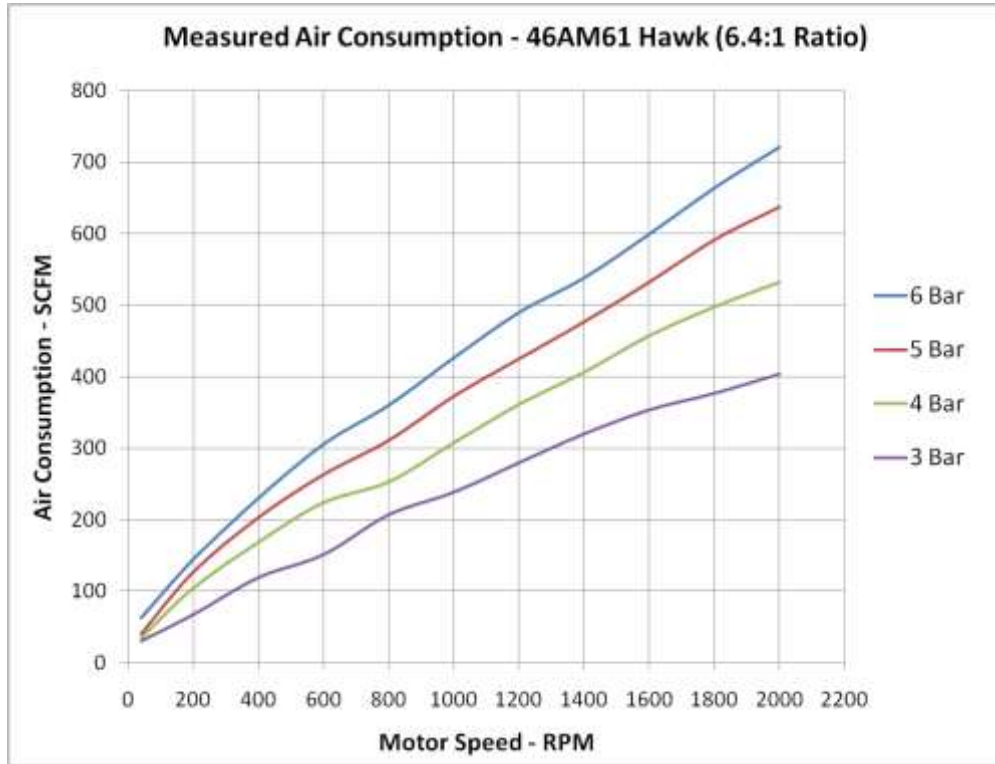


Figure 6 Measured Air Consumption

Ph: +612 4272 8311  
Fx: +612 4272 8533  
30 Waverley Drive  
Unanderra NSW 2526  
sales@clarksmineingservices.com.au

Designers and manufacturers of  
mining and construction equipment



ABN: 42 050 287 173 CAN 050 287 173  
Kalgara Pty Ltd

[www.clarksmineingservices.com.au](http://www.clarksmineingservices.com.au)

[goo.gl/q0oy4K](https://goo.gl/q0oy4K)



# 46AM60 HAWK AIR MOTOR

## PRODUCT DATA SHEET

### OPTION SELECTOR

Sample Model No	4	6	A	M	6	0	1	1	1	0	2
Position	0	1	2	3	4	5	6	7	8	9	10
0 1	46 = Category										
2 3	AM = Descriptor (Air Motor)										
4 5	60 = Hawk Motor										
6	1 = Level										
7	1 = IEC 100 B14 Face Mount 2 = IEC100 B5 Flange 5 = SAE A Mount 8 = Special										
8	1 = Diameter 28mm shaft, 8mm key 3 = DIN 5482 20 tooth shaft 5 = Female spline output 3/4" 13t 7 = 1.5"CC Straight Shaft 8 = M30 Threaded Special										
9 10	01 = Side Port (open) 02 = End Port (open)										

Ph: +612 4272 8311  
 Fx: +612 4272 8533  
 30 Waverley Drive  
 Unanderra NSW 2526  
 sales@clarksmineingservices.com.au

**Designers and manufacturers of  
 mining and construction equipment**

