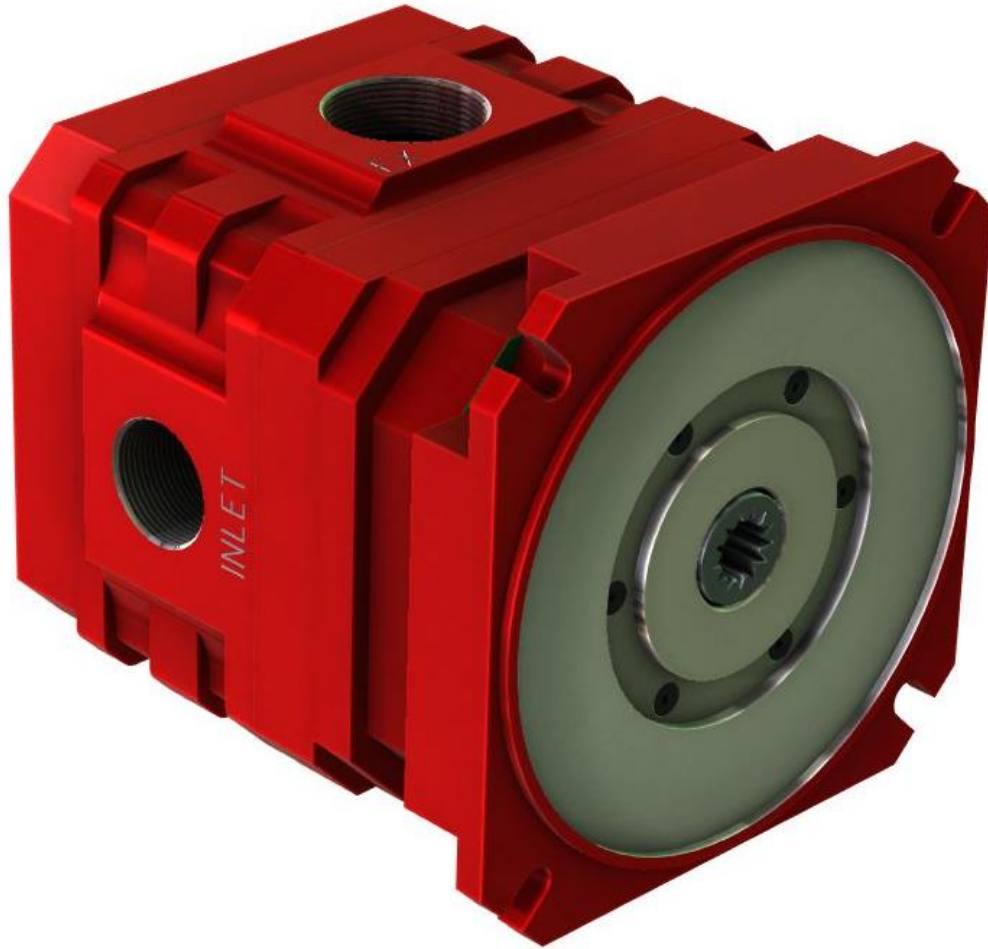




QM-2000/2001 QUAD MOTOR

PRODUCT DATA SHEET



QM-2000/2001 QUAD MOTOR

The motor to suit all conditions. The Quad motor represents the latest development in air motors from Clark's Mining Services. The high torque is provided by four proven robust and reliable rotors. The Quad motor is a compact air motor solution for a diverse range of mining and civil applications. With rated power of 16kW at 600kPa the Quad motor is ideal for use on crawler track drill rigs including the Scorpion.

An inline lubricator is recommended.

Rotation can be provided either clockwise (QM-2000) or anti-clockwise (QM-2001).

APPLICATION

- Civil
- Mining
- Air track drill rigs
- Power packs
- Conveyors

FEATURES

- Metal construction
- High torque
- Variable speed
- Oil filled gearbox
- Dual exhaust ports

Ph: +612 4272 8311
Fx: +612 4272 8533
30 Waverley Drive
Unanderra NSW 2526
sales@clarksmineingservices.com.au

**Designers and manufacturers of
mining and construction equipment**

ABN: 42 050 287 173 CAN 050 287 173
Kalgara Pty Ltd

www.clarksmineingservices.com.au

goo.gl/q0oy4K





QM-2000/2001 QUAD MOTOR

PRODUCT DATA SHEET

SPECIFICATION

	METRIC	IMPERIAL	METRIC	IMPERIAL
Operating Pressure	300 kPa	44 psi	600 kPa	87 psi
Air Consumption (at Max. Power)	12 m ³ /min	424 SCFM	19.5 m ³ /min	687 SCFM
Starting Torque	78 Nm	57.5 ft-lb	147 Nm	108.4 ft-lb
Max Speed	2000 rpm	2000 rpm	2000 rpm	2000 rpm
Max. Power	8.5 kW	11.4 hp	16 kW	21.4 hp
Speed at Max. Power	1600 rpm	1600 rpm	1600 rpm	1600 rpm
Torque at Max. Power	49 Nm	36 ft-lb	96 Nm	68.6 ft-lb
Noise Level (with typical 2 inch reflective muffler)	84 dBA	84 dBA	90 dBA	90 dBA
Noise Level (with absorptive reflective muffler)	74 dBA	74 dBA	80 dBA	80 dBA
Weight	61kg	134 lb	61kg	134 lb

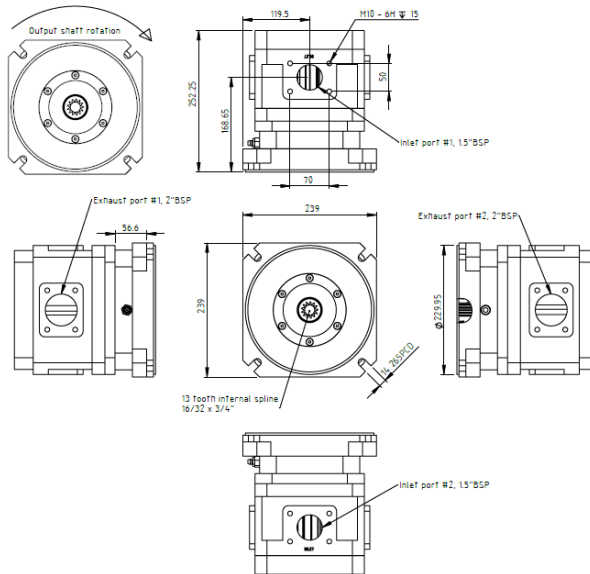


Figure 1 QM-2000 General Arrangement (Counter Clockwise Rotation)

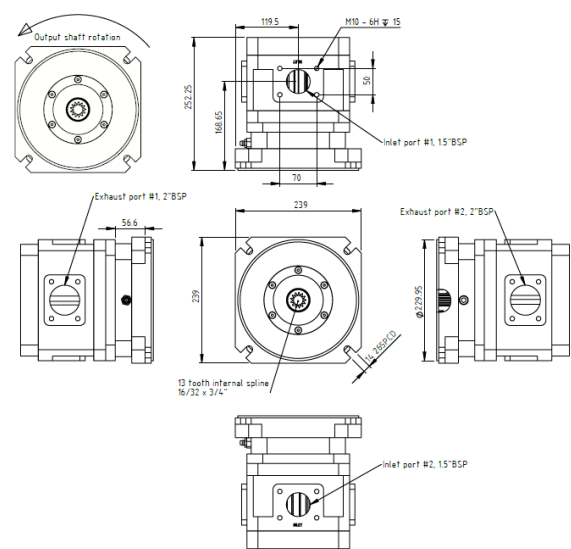


Figure 2 QM-2001 General Arrangement (Clockwise Rotation)

Ph: +612 4272 8311
 Fx: +612 4272 8533
 30 Waverley Drive
 Unanderra NSW 2526
 sales@clarksmineingservices.com.au

**Designers and manufacturers of
 mining and construction equipment**

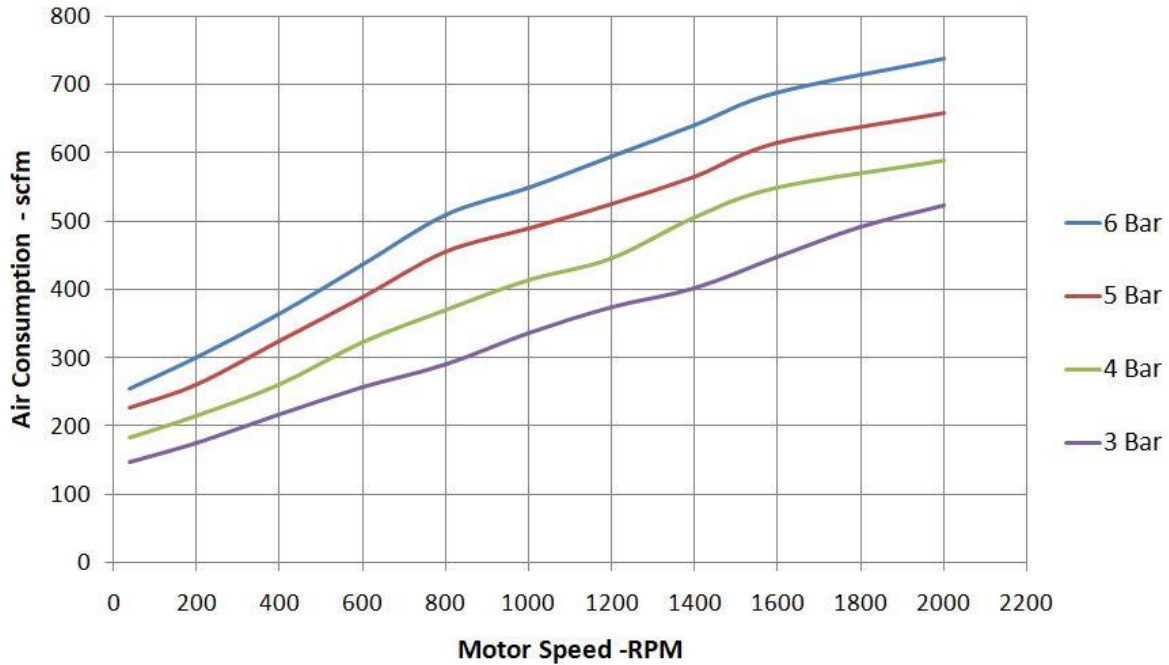




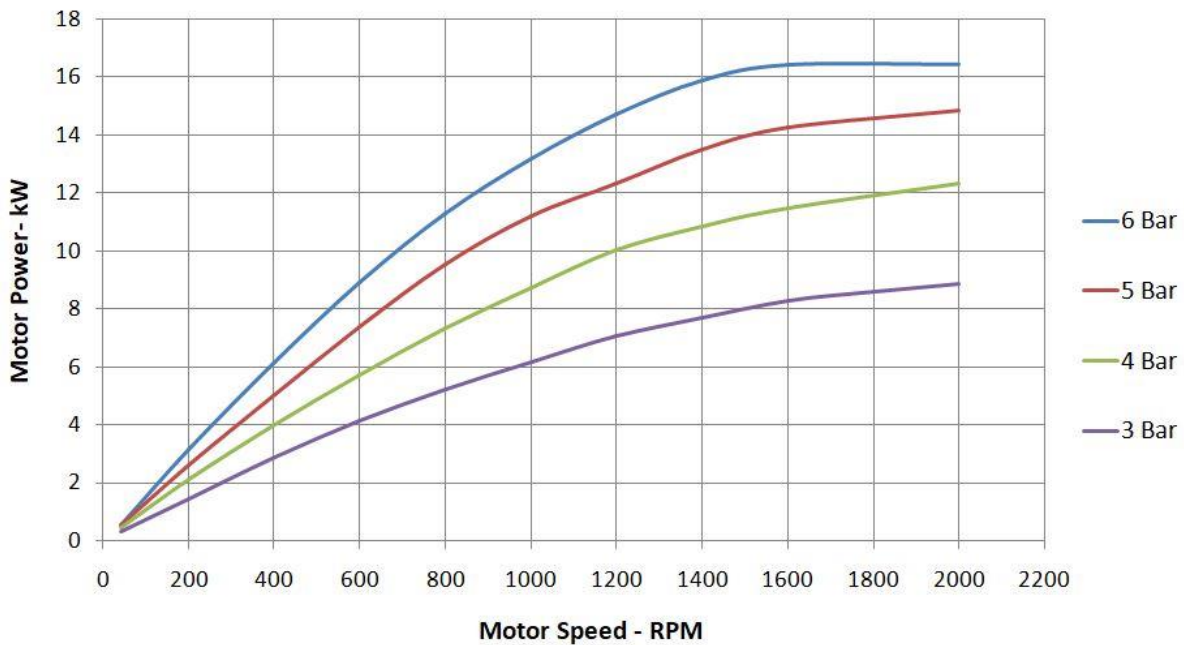
QM-2000/2001 QUAD MOTOR

PRODUCT DATA SHEET

Measured Air Consumption - Quad Motor



Measured Power - Quad Motor



Ph: +612 4272 8311
 Fx: +612 4272 8533
 30 Waverley Drive
 Unanderra NSW 2526
 sales@clarksmineingservices.com.au

Designers and manufacturers of
 mining and construction equipment



ABN: 42 050 287 173 CAN 050 287 173
 Kalgara Pty Ltd

www.clarksmineingservices.com.au

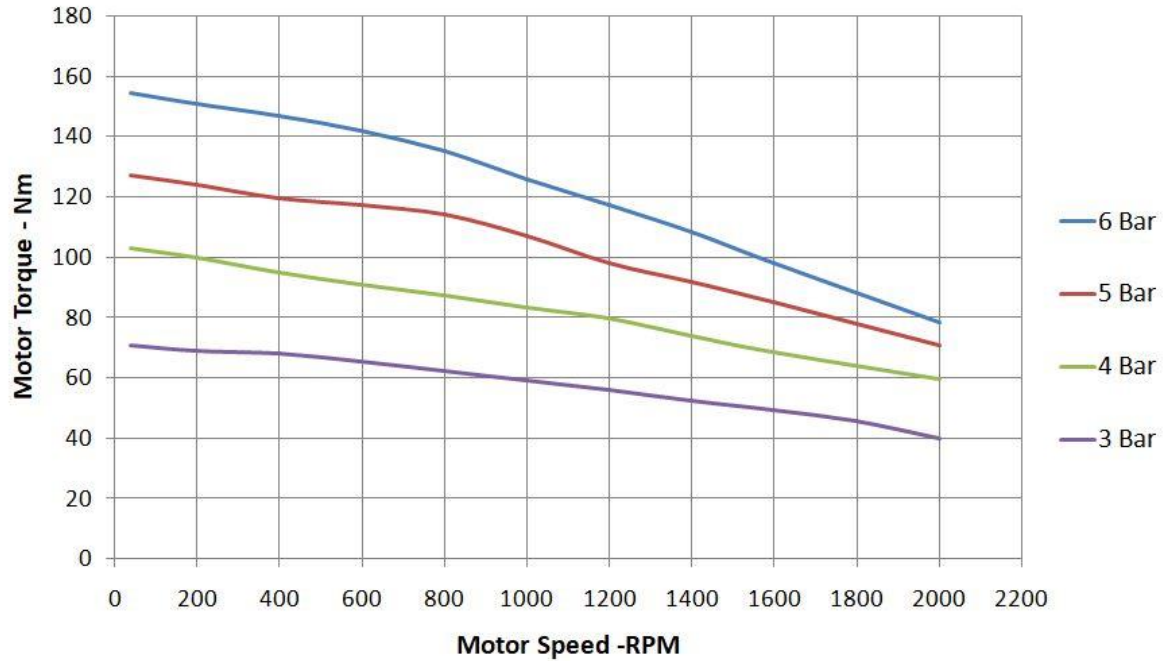
goo.gl/q0oy4K



QM-2000/2001 QUAD MOTOR

PRODUCT DATA SHEET

Measured Torque - Quad Motor



Ph: +612 4272 8311
Fx: +612 4272 8533
30 Waverley Drive
Unanderra NSW 2526
sales@clarksmineingservices.com.au

Designers and manufacturers of
mining and construction equipment

ABN: 42 050 287 173 CAN 050 287 173
Kalgara Pty Ltd

www.clarksmineingservices.com.au

goo.gl/q0oy4K

