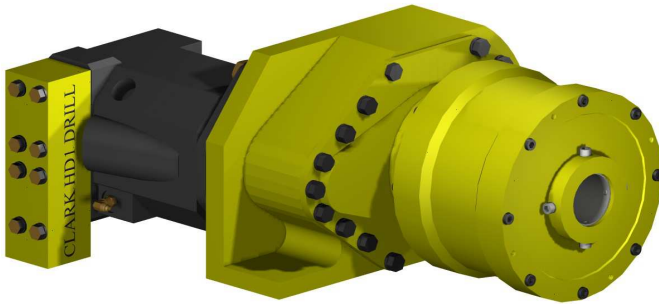


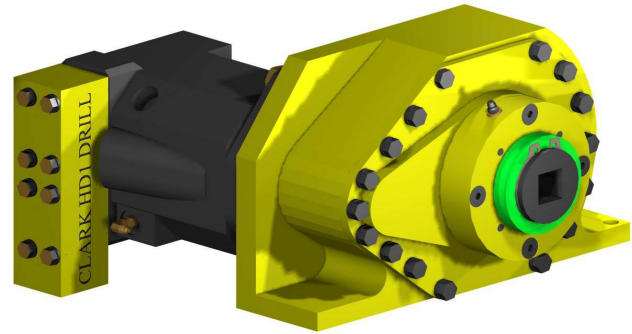


# Clark Hydraulic Drill Units

Product Data Sheet



HD1003 Through the Chuck Drill  
**Feed Mast Mount Drill**



HD1005 Top Head Drill  
**Feed Mast Mount Drill**

## Clark Hydraulic Drill Units

The Clark Hydraulic Drill Units are a two speed drills for mounting on a mechanized feed bed. Two units are available, one with a Through Chuck for use with AW or AWJ drill rods, the other is a top head with a square drive chuck for 25mm drill steels. The drill units are used in a range of applications from secondary support and gas drainage in coal mines through to rock bolting in civil tunnels and building projects. The HD1003 through chuck drill incorporates an air chuck system that allows for gripping of the drill steel and also clears cuttings away from the jaws.

### 2 Speed Drill Head:

Max High speed 625rpm @25l/min  
Max Low speed 183rpm @25l/min  
Max Torque High speed  
115Nm @180 Bar  
Max Torque Low speed  
350Nm @180 Bar  
Oil requirement is 25l/min max  
180Bar  
Chuck gripping force: 40 kN (at 6.5  
bar Air pressure)  
Top head chuck: 25mm square  
Weight: (includes gearbox oil)  
HD1005: 45kg  
HD1003: 55kg



*Designers and  
manufacturers of  
mining and construction  
equipment*

A.B.N. 42 050 287 173 | A.C.N. 050 287 173

### SALES

ph. 612 4272 8311  
fx. 612 4272 8533  
30 Waverley Drive  
Unanderra NSW 2526  
cmsadmin@bigpond.com

### ACCOUNTS

ph. 612 4271 4036  
fx. 612 4271 4015  
30 Waverley Drive  
Unanderra NSW 2526  
clarksmineaccounts@bigpond.com

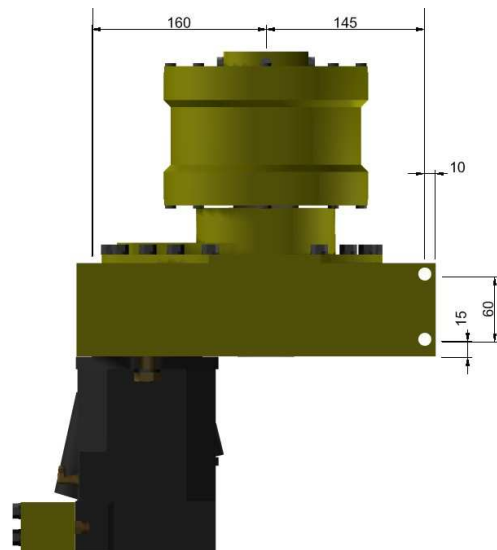
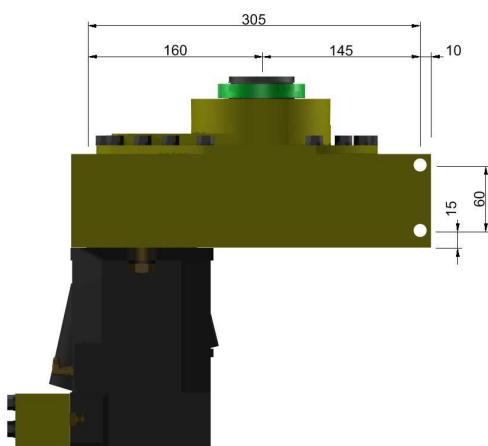
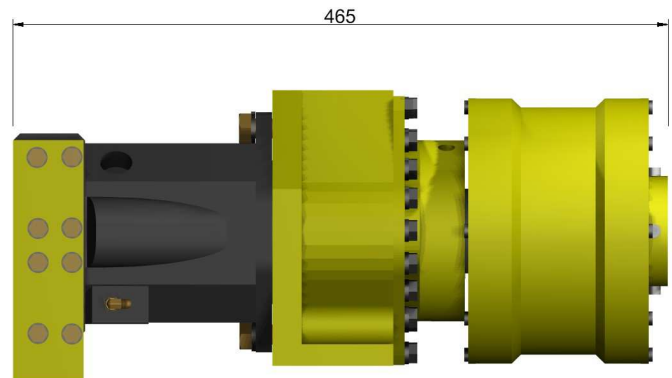
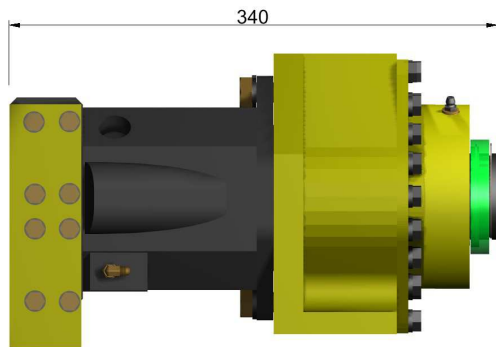
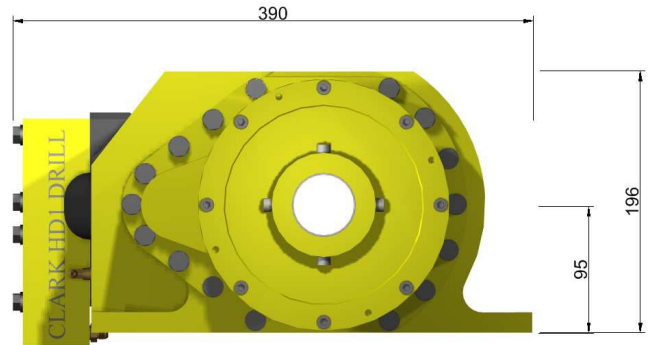
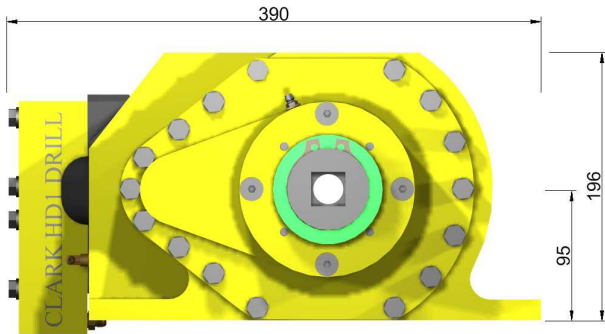
[www.clarksmineingservices.com.au](http://www.clarksmineingservices.com.au)

[g00.gl/q0oy4K](https://www.youtube.com/watch?v=q0oy4K)



# Clark Hydraulic Drill Units

Product Data Sheet



*Designers and  
manufacturers of  
mining and construction  
equipment*

A.B.N. 42 050 287 173 | A.C.N. 050 287 173

## SALES

ph. 612 4272 8311  
fx. 612 4272 8533  
30 Waverley Drive  
Unanderra NSW 2526  
cmsadmin@bigpond.com

## ACCOUNTS

ph. 612 4271 4036  
fx. 612 4271 4015  
30 Waverley Drive  
Unanderra NSW 2526  
clarksmineaccounts@bigpond.com

[www.clarksmineingservices.com.au](http://www.clarksmineingservices.com.au)

[gou.gl/q0oy4K](https://www.youtube.com/watch?v=q0oy4K)