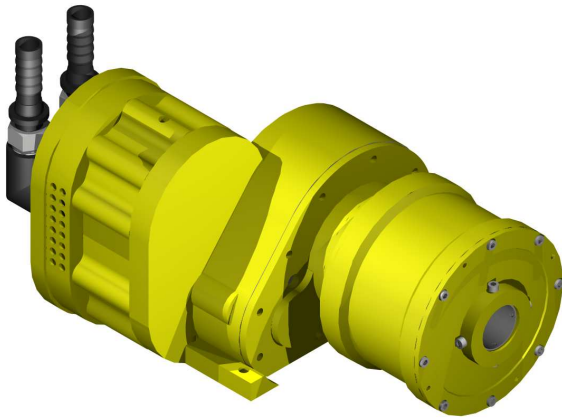


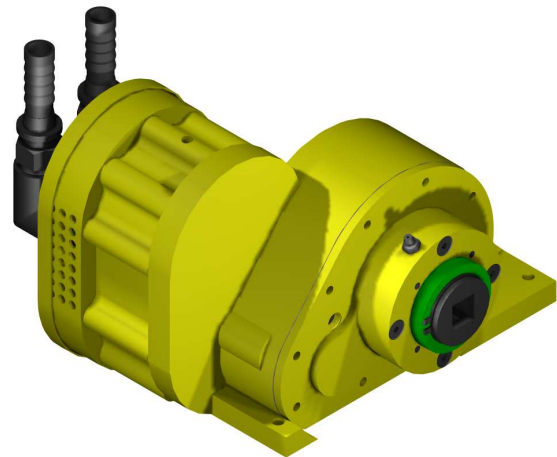


CLARK RM102 PNEUMATIC DRILL

Product Data Sheet



TD1003 Through the Chuck Drill
Feed Mast Mount Drill



TD1005 Top Head Drill
Feed Mast Mount Drill

RM102 DRILL

The Clark RM102 range of drills are a rig mounted rotary drill for drilling in coal and soft stone. The drill units have proven their worth on the Clark AT5000 drill rig since 2001. The drills have been used for rib drilling, spiling, floor drilling, roof drilling and coring. Two styles are available, the square drive top head version or the through chuck type to suit AW drill rods ($\text{\O}43\text{mm}$) allowing the rods to be passed through the centre of the chuck. The RM102 motor section is also used as tramming motors, grout mixer motors and also to drive hydraulic powerpacks.

Applications:

- Roof bolting
- Rib drilling
- Spiling
- Coring
- Floor drilling

Options:

- 25mm square drive
- AW through chuck
- Flexi bolt through chuck

Features:

- Metal construction
- Oil filled gearbox
- Variable speed



*Designers and
manufacturers of
mining and construction
equipment*

A.B.N. 42 050 287 173 | A.C.N. 050 287 173

SALES

ph. 612 4272 8311
fx. 612 4272 8533
30 Waverley Drive
Unanderra NSW 2526
cmsadmin@bigpond.com

ACCOUNTS

ph. 612 4271 4036
fx. 612 4271 4015
30 Waverley Drive
Unanderra NSW 2526
clarksmineaccounts@bigpond.com

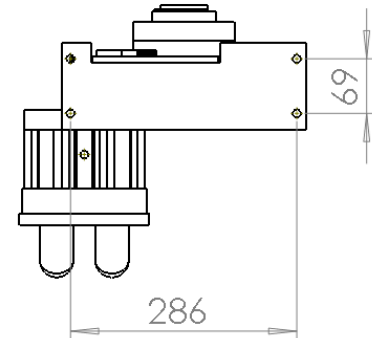
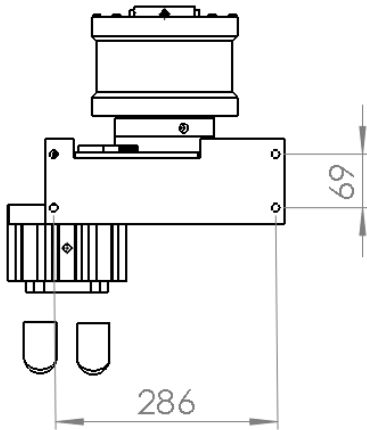
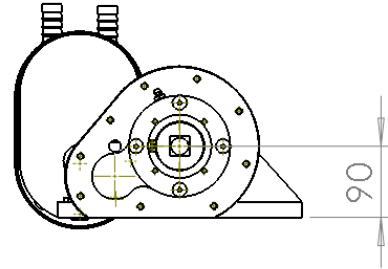
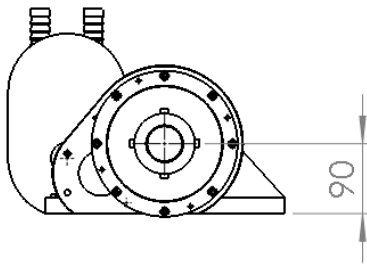
www.clarksmineingservices.com.au

[g00.gl/qOoy4K](https://www.youtube.com/watch?v=qOoy4K)



CLARK RM102 PNEUMATIC DRILL

Product Data Sheet



Specifications at 650 kPa:

Air consumption (max): 118L/sec

Maximum Speed: 650rpm

Maximum Stall Torque: 450Nm

Suit rod diameter: 43mm

Chuck gripping force: 40 kN (at 6.5 bar)

Weight: (includes gearbox oil)

Through the chuck: 51kg

Specifications at 650 kPa:

Air consumption (max): 118L/sec

Maximum Speed: 650 rpm

Maximum Stall Torque: 450Nm

Top head chuck: 25mm square

Weight: (includes gearbox oil)

Top head: 40kg



*Designers and
manufacturers of
mining and construction
equipment*

A.B.N. 42 050 287 173 | A.C.N. 050 287 173

SALES

ph. 612 4272 8311

fx. 612 4272 8533

30 Waverley Drive

Unanderra NSW 2526

cmsadmin@bigpond.com

ACCOUNTS

ph. 612 4271 4036

fx. 612 4271 4015

30 Waverley Drive

Unanderra NSW 2526

clarksmineaccounts@bigpond.com

www.clarksmine.com.au

[goo.gl/q0oy4K](https://www.youtube.com/watch?v=q0oy4K)